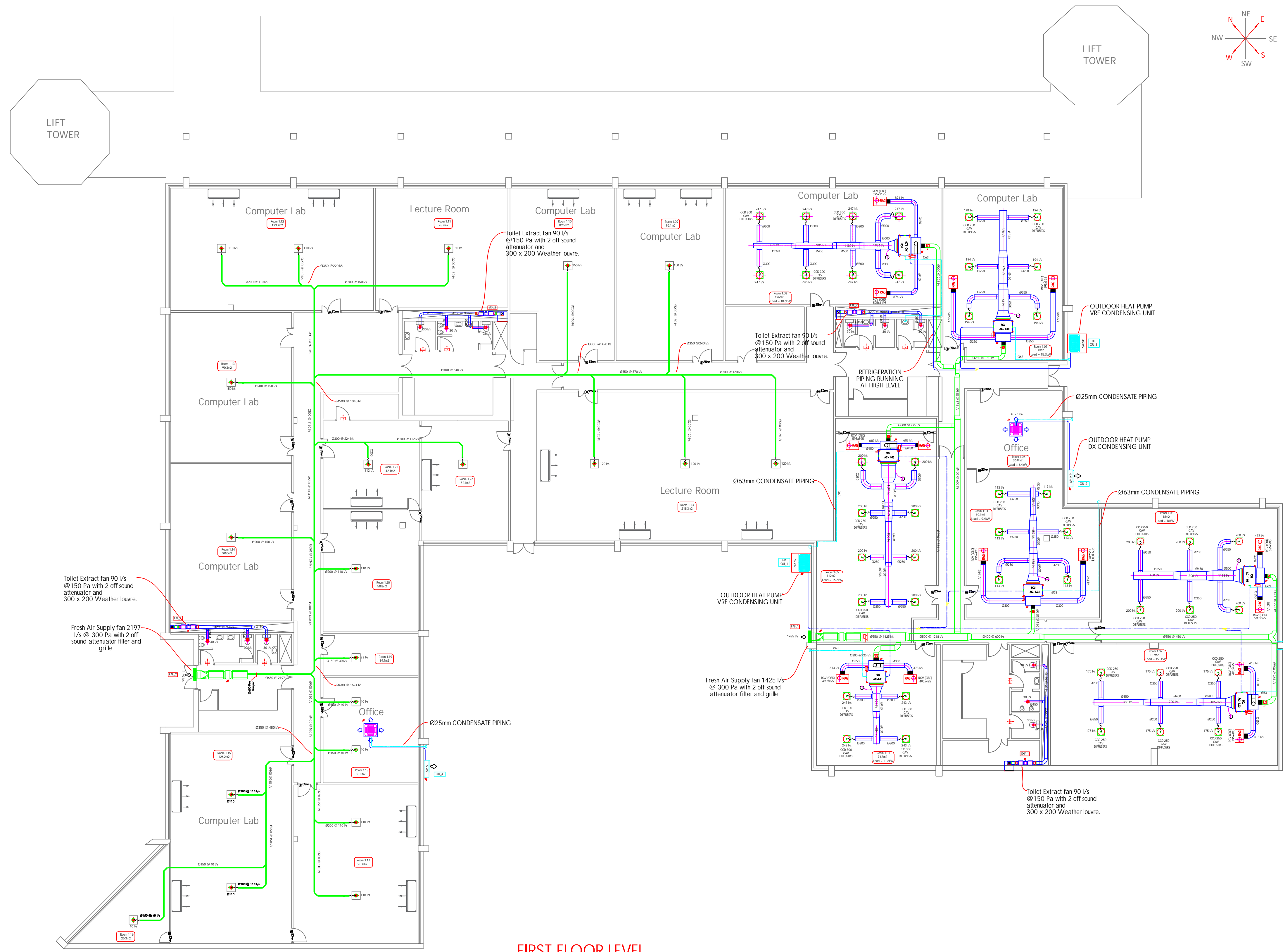


Notes:

Notes:

LEGEND

- EXISTING INDOOR AC UNIT
- TOILET EXTRACT DUCT
- ROAD SUPPLY AIR DIFFUSER
- SUPPLY AIR DIFFUSER
- RETURN AIR GRILLE
- FLEXIBLE DUCT
- FLEXIBLE CONNECTION TO DIFFUSER, DUCT VALVE, ETC.
- FRESH AIR SUPPLY DUCT c/w TRANSFORMATION
- EXTRACT AIR DUCT c/w TRANSFORMATION
- RETURN AIR DUCT c/w TRANSFORMATION
- FRESH AIR DUCT c/w TRANSFORMATION
- KITCHEN CANOPY EXTRACT DUCTING c/w TRANSFORMATION
- CONNECTION/TAKE-OFF
- DUCT RISER
- DUCT STOPPER
- CHILLED WATER OR REFRIGERATION SUPPLY RETURN PIPE
- CONDENSATE DRAIN PIPING
- DOOR GRILLE
- INDICATES DOORS TO BE INSERTED BY OTHERS
- ROOM TEMPERATURE SENSOR
- OPPOSED BLADE DAMPER
- WEATHER LOUVRE/DAMPER
- SOUND ATTENUATOR
- RECESSED SPLIT - INDOOR UNIT
- 4-WAY BLOW CASSETTE - INDOOR UNIT
- 6-WAY BLOW CASSETTE TYPE SPLIT UNIT - INDOOR UNIT
- FANCOIL UNIT
- OUTDOOR VRF CONDENSING UNIT
- AIR HANDLING UNIT
- EXTRACT OR FRESH AIR FAN ON-LINE DUCT FAN c/w FIRE/SMOKE DAMPER, SILENCERS & WEATHER LOUVER
- EXTRACT OR FRESH AIR FAN OFF-LINE DUCT FAN c/w FIRE/SMOKE DAMPER, SILENCERS & WEATHER LOUVER
- FLEXIBLE COLLAR
- FIRE DAMPER
- VOLUME CONTROL DEVICE/ELECTRONIC ACTUATOR
- RETURN AIR GRILLE ARROW
- SUPPLY AIR GRILLE ARROW
- FRESH AIR SUPPLY FAN
- EXTRACT AIR FAN NUMBER



FIRST FLOOR LEVEL
SCALE: 1:150

Rev.	Description	Date	By
1	ISSUED FOR TENDER	15.10.2019	B.M.
0	ISSUED FOR APPROVAL	07.11.2018	B.M.

Proposal	Construction
Konsep	Konstruksie
Design	'As Built
Ontwerp	Soos Gebou
Tender	Council approved
	Stadsraad Goedkeuring

Design by	B.M.	Drawn by	B.M.	Approved	L.G.
Ontwerp deur		Geteken deur		Gekleur	

ARCHITECT
ARGITEK

ENGINEER:
ENGINEER

MALATJI & ASSOCIATES
POWERED BY EXCELLENCE

DESIGN | ENGINEERING | PROJECT MANAGEMENT | PROPERTY & FACILITIES

CAPE TOWN: 2nd Floor, Unit 75, Hyper Villas Brackenfell, Cape Town, 7560
Cell: +27(0) 76 104 8878
Fax: +27(0) 86 204 1800
e-mail: benjamin.malatji@ma-eng.co.za
Web: www.ma-eng.co.za

PHALABORWA: Office No 9, ADA Building Phalaborwa, 1390
Cell: +27(0) 76 104 8878
Fax: +27(0) 86 204 1800
e-mail: excellence@ma-eng.co.za
Web: www.ma-eng.co.za

PROJECT:
PROJEK:

**CPUT CAPE TOWN
ENGINEERING BUILDING**

TITLE:
TITEL:

**FIRST FLOOR
HVAC LAYOUT**

Scale	(A1)	1:150	Date	11.10.2019
-------	------	-------	------	------------

Drg. Tek. No.	J089/30/02	Rev. Hrs.	1
---------------	------------	-----------	---